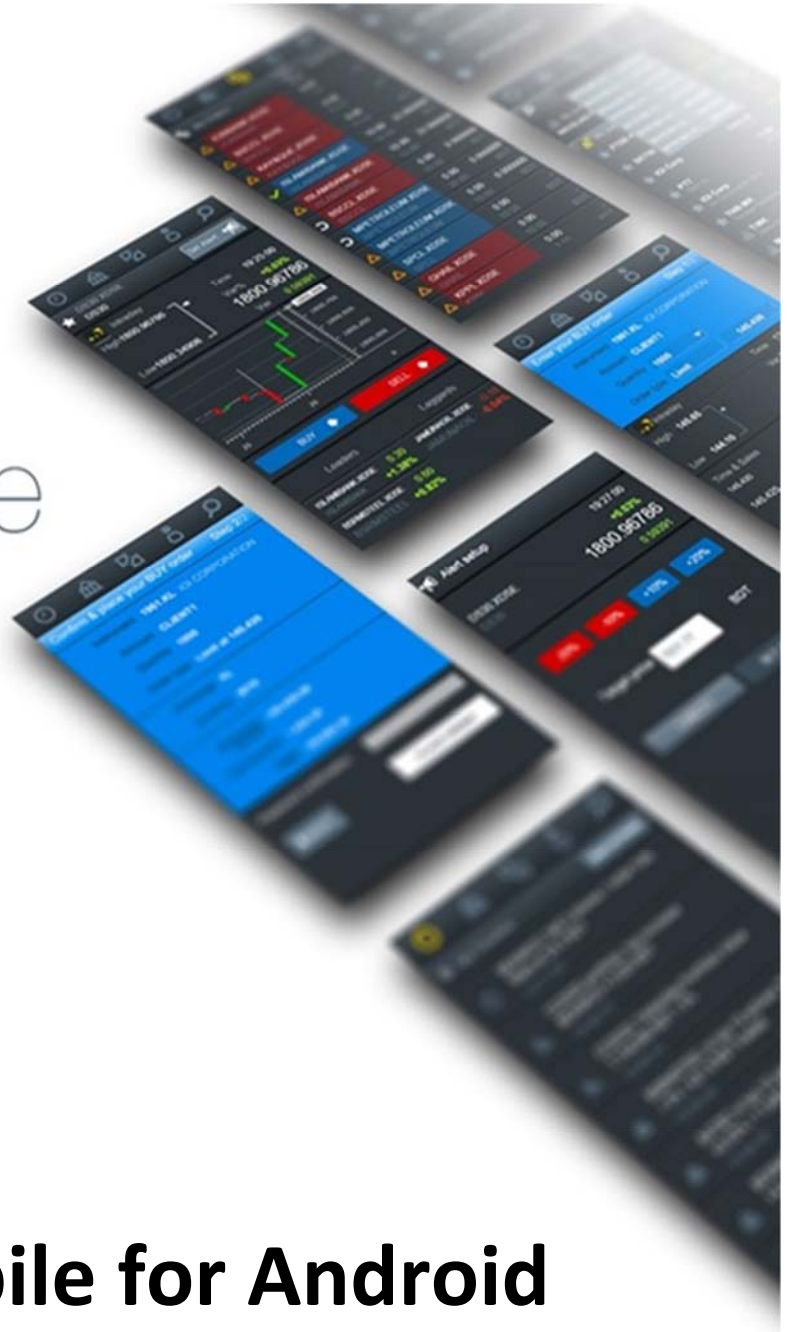




DSE-Mobile

Powered by Flextrade



DSE-Mobile for Android (VIP & Trader) Manual



Table of content:

1	INTRODUCTION	3
2	INSTALL DSE-MOBILE ON ANDROID.....	4
3	LOGIN TO APP	5
4	OVERVIEW OF THE APP	6
5	MARKET DATA.....	6
	5.1 PORTFOLIO SUMMARY	6
	5.2 SEARCH SECURITIES & BUILD WATCH-LIST	6
	5.3 WATCH-LIST FILTERS.....	7
	5.4 SECURITIES & INDEX MARKET DATA	10
	5.5 SET AND MANAGE PRICE ALERTS	13
	5.6 NOTIFICATIONS	13
6	TRADING	15
	6.1 PLACE ORDER	15
	6.2 MY ORDERS - CHECK INTRADAY ORDERS AND EXECUTIONS.....	15
	6.3 ORDER DETAILS & CANCELLATION.....	16
7	ACCOUNT DETAILS	17
8	SERVICE AVAILABILITY	18
	8.1 WARNING INDICATORS	18
	8.2 TROUBLESHOOTING	19
9	SUPPORT INFORMATION.....	20
10	MORE INFORMATION ONLINE	20



1 Introduction

Dhaka Stock Exchange (DSE) has implemented Centralized Order Management System 'DSE-FlexTP' for the TREC holders of the Exchange to manage their orders. The Mobile App, is to leverage the DSE-FlexTP architecture to make trading available to investors from mobile device. This will connect investors to the state-of-the-art technology of trading. DSE-Mobile will be facilitate to bring new dimension of business opportunities in the capital market.

DSE-Mobile Features:

- Intuitive design
- Access to market information
- Order submission in real-time (Only available in “DSE-Mobile Trader”)
- Portfolio value and executions
- Real-time P&L
- Investor account & portfolio information
- Market opportunities on favorites
- Real time notifications on business opportunities

Three different accessibility in DSE-Mobile:

- **DSE-Mobile VIP** – Allows you to be aware of your portfolio and favorites without efforts, keep in touch with professional trader to get high-end services. Trader will professionally manage best execution of your orders.
- **DSE-Mobile Trader** – Allows you to be aware of your portfolio and favorites without efforts, keep in touch with professional trader to get high-end services while availing ability to place orders yourself.
- **DSE-Mobile Biz Owner** - Allows business owner to be aware of activities of their broking business status. This is only for TREC holder.

Minimum requirements to use the DSE-Mobile:

- Android version: Android 4.4 or higher
- Phone viewport size (screen resolution): over 320px
- Internet data connectivity: 3G or Wi-Fi

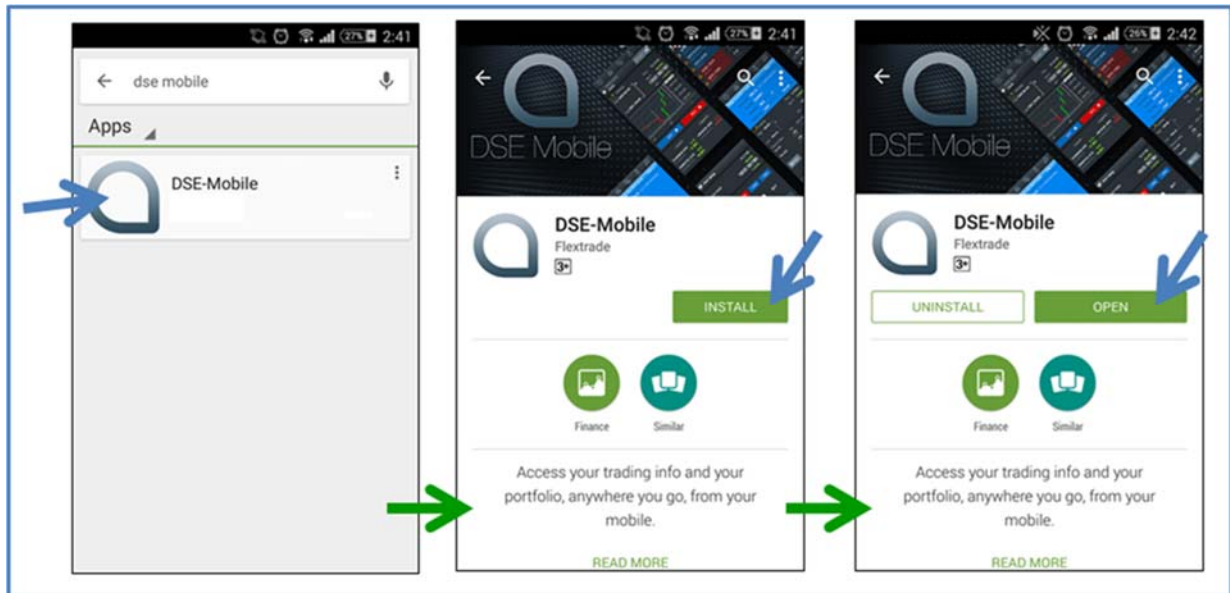
Access to DSE-Mobile:

- Contact your broker for registration and subscription for your desired DSE Mobility product.



2 Install DSE-Mobile on Android

1. Once your registration has been completed by your broker, you will receive your credentials (login/password) by email.
2. Tap on the download link of the email, or search for “DSE Mobile” in the Google Play Store.
3. Select the app and tap on “Install”.

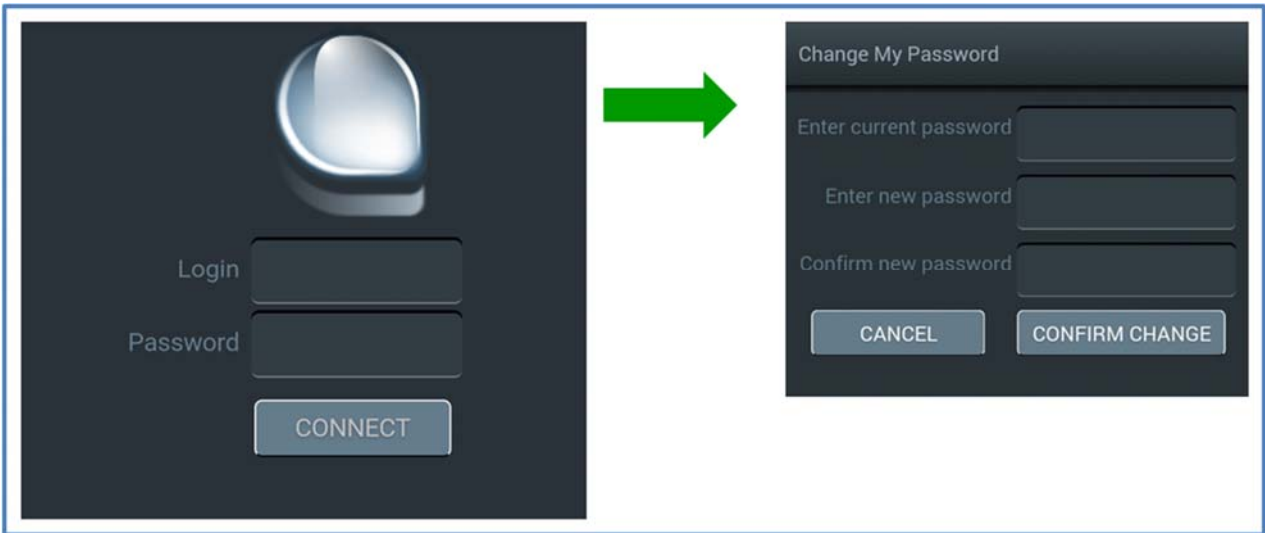


N.B.: This page can be used to update the app to newer version.



3 Login to App

- Open the app and enter your credentials to login. The app might prompt for updates time to time. In most cases your phone will update it automatically. This is to ensure that you access all the latest features that are available.
- On first log-in the app will prompt you to change the password to ensure only you have access to your account.

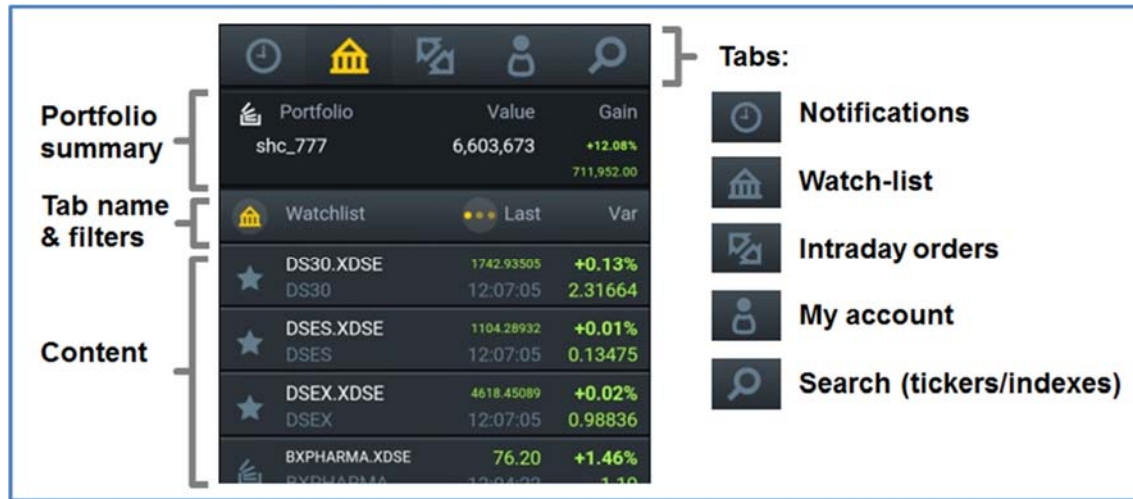


Login and password are provided by your broker by email.



Please contact your broker IT desk for lost password, or blocked access.

4 Overview of the App



5 Market Data

5.1 Portfolio Summary

- Your Broker and Trading Account Code e.g. Broker 'SHC' and Trading Code '777'
- Current Market Value of your portfolio e.g. 6,603,673
- Profit and Loss (PnL) e.g. +12.08% and 711,952.00 BDT


Portfolio summary

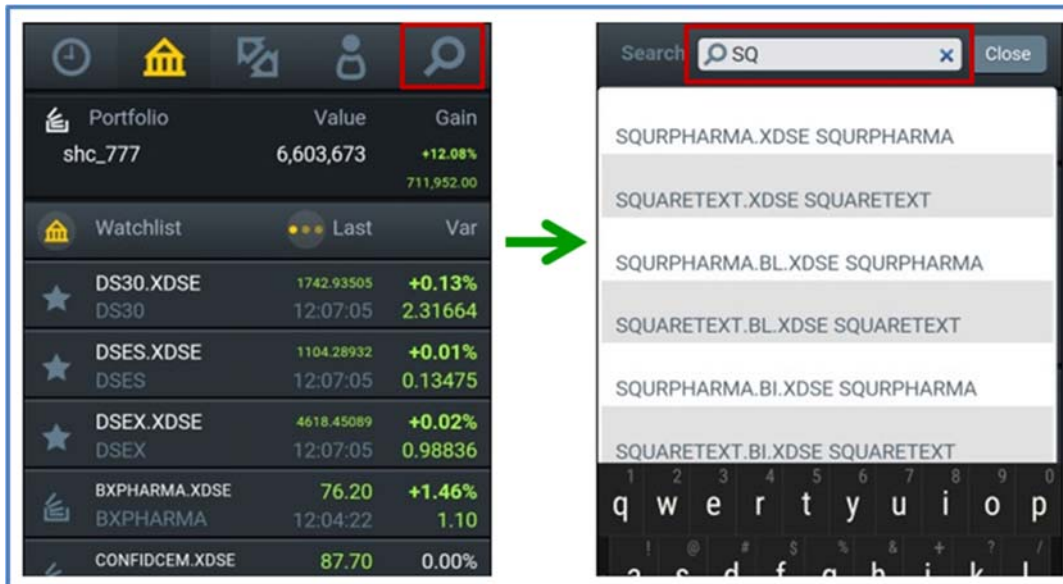
Portfolio	Value	Gain
shc_777	6,603,673	+12.08% 711,952.00

5.2 Search Securities & Build Watch-List

- The Watch-list will automatically display market index and your portfolio position. It can be customized by adding/removing favorites for easy access to market information.
- Way to search securities:
 1. Tap on the search tab and type security's name or trading code.
 2. Select one of the matching securities.
 3. "BL" and "BI" postfix following the securities code indicate Block and Buy-In boards respectively e.g. "SQURPHARMA.BL", "SQURPHARMA.BI".




4. Add it to your Watch-list by tapping on the star icon  of the securities details (see #5.4).







5.3 Watch-List filters

- Individual Securities/Index market data details (#4.3) can be accessed
 - By tapping on securities from the Watch-list, or
 - From the search;
- Market data can be filtered using different options explains in the following sections.

5.3.1 Switch Watch-List Type

Tap on the icon  in tab, following filtered to be displayed:

- Watch List – Real time information of your Portfolio, Favorite Securities and DSE Indices
- Portfolio – Real time information of your Portfolio Securities only
- Favorites – Real time information of your Favorite Securities and DSE Indices
- Alerts – Display your configured alerts

 **Watch List**
 **Portfolio**
 **Favorites**
 **Alerts**

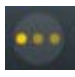
Portfolio	Value	Gain
shc_777	6,603,673	+12.08%
711,952.00		
Watchlist	Pos.	Gain
BXPHERMA.XDSE BXPHERMA	3500 65.00 BDT	+0.17% 39,200
CONFIDCEM.XDSE CONFIDCEM	19900 89.10 BDT	+0.10% 152,995
DESCO.XDSE DESCO	10990 47.20 BDT	+0.09% 45,098

Portfolio	Value	Gain
shc_777	6,603,673	+12.08%
711,952.00		
Portfolio	Last	Var
BXPHERMA.XDSE BXPHERMA	76.20 12:04:22	+1.46% 1.10
CONFIDCEM.XDSE CONFIDCEM	87.70 11:54:48	0.00% 0.00
DESCO.XDSE DESCO	51.30 12:00:53	0.00% 0.00
GP.XDSE GP	264.70 12:01:43	+0.41% 1.10

Portfolio	Value	Gain
shc_777	6,603,673	+12.08%
711,952.00		
Favorite	Last	Var
DS30.XDSE DS30	1742.93505 12:09:05	+0.13% 2.31664
DSES.XDSE DSES	1104.28932 12:09:05	+0.01% 0.13475
DSEX.XDSE DSEX	4618.45089 12:09:05	+0.02% 0.98836
ABBANK.XDSE ABBANK	20.60 10:55:30	0.00% 0.00

Portfolio	Value	Gain
shc_777	7,326,278	+14.10%
905,605.90		
My Alerts	Target	Status
ABB1STMF.XDSE ABB1STMF	4.2 10:00:24	×
BXPHERMA.XDSE BXPHERMA	75.30 11/2/16	×
CITYGENINS.XDSE CITYGENINS	13.4 10:00:41	×
KBPPWBIL.XDSE KBPPWBIL	20.1 10:01:06	×

5.3.2 Switch Watch-List Columns View

Tap on the icon  to choose following displays:

1) Last & Var

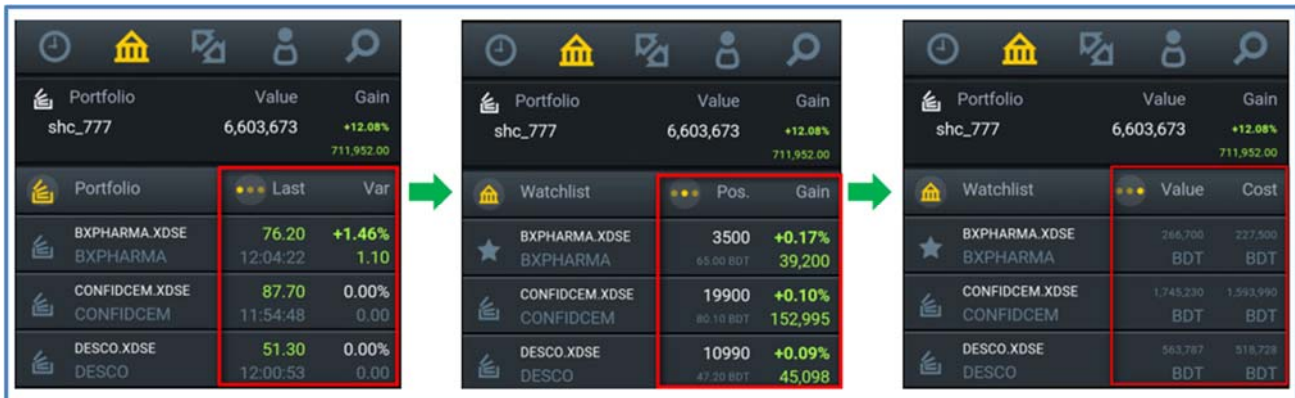
- Last – The Last Trade Price (LTP) and Time/Date of the securities;
e.g. BXPHERMA LTP is 76.20 at 12:02:04;
- Var – Variation of price in percentage and amount of the securities
e.g. for BXPHERMA +1.46% and 1.10 BDT;

2) Position & Gain

- Pos. – Your position and unit cost of the securities
e.g. you have 3500 BXPHERMA and unit cost is 65.00 BDT;
- Gain – Profit/loss of the securities in percentage and amount
e.g. your gain (unrealized) on BXPHERMA is +0.17% and 39,200 BDT;

3) Value & Cost

- Value – Total value of the securities e.g. for BXPHERMA total value is 266,700 BDT;
- Cost – Total cost of the securities e.g. for BXPHERMA your total cost is 227,500 BDT;



The image shows three sequential screenshots of the DSE-Mobile app's watchlist, illustrating how to switch between different column views. Each screenshot shows a portfolio named 'shc_777' with a total value of 6,603,673 and a gain of +12.08%.

View 1: Last & Var

Portfolio	Last	Var
BXPHERMA.XDSE BXPHERMA	76.20 12:04:22	+1.46% 1.10
CONFIDCEM.XDSE CONFIDCEM	87.70 11:54:48	0.00% 0.00
DESCO.XDSE DESCO	51.30 12:00:53	0.00% 0.00

View 2: Position & Gain



Watchlist	Pos.	Gain
BXPHERMA.XDSE BXPHERMA	3500 65.00 BDT	+0.17% 39,200
CONFIDCEM.XDSE CONFIDCEM	19900 80.10 BDT	+0.10% 152,995
DESCO.XDSE DESCO	10990 47.20 BDT	+0.09% 45,098

View 3: Value & Cost

Watchlist	Value	Cost
BXPHERMA.XDSE BXPHERMA	266,700 BDT	227,500 BDT
CONFIDCEM.XDSE CONFIDCEM	1,745,230 BDT	1,593,990 BDT
DESCO.XDSE DESCO	563,787 BDT	518,728 BDT

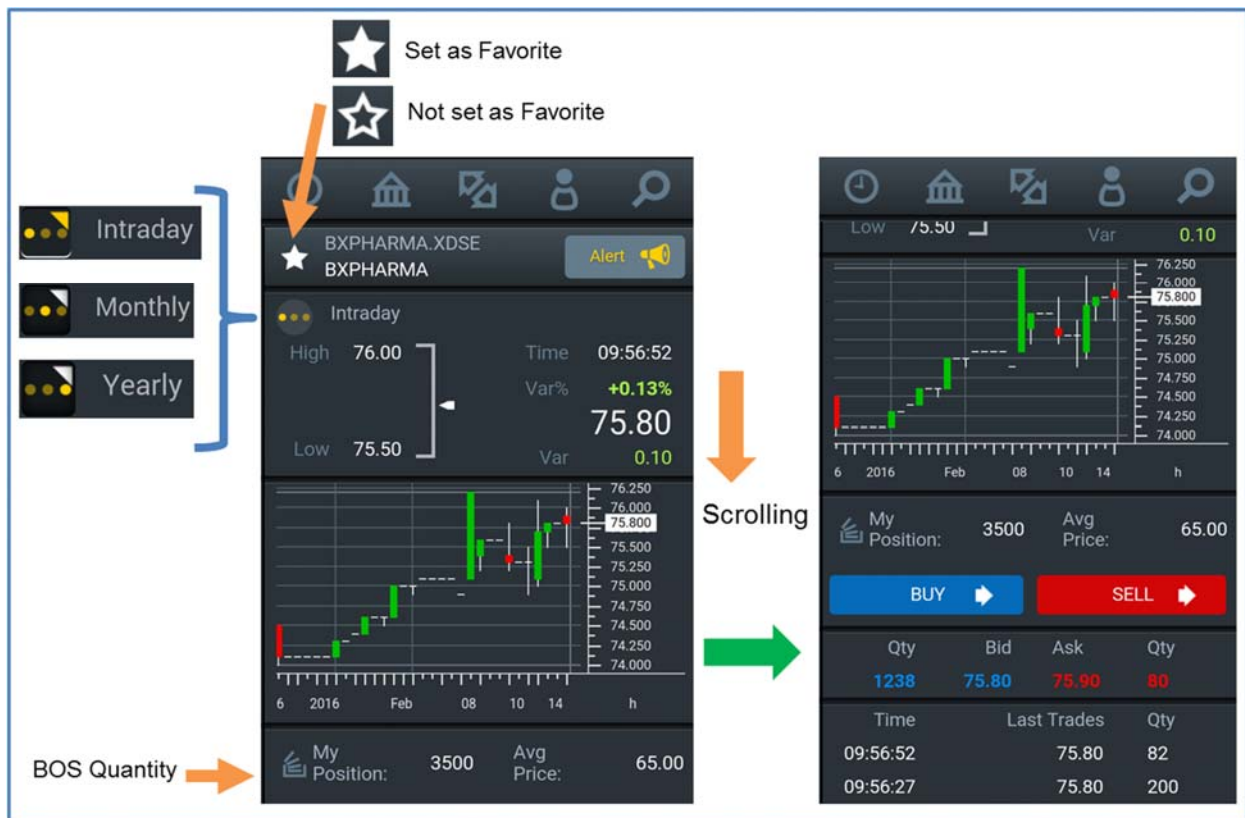
5.4 Securities & Index Market Data


Individual Securities/Index market data details can be accessed by tapping on a securities

- From the Watch-list , or
- From the search 

5.4.1 Securities Details

The following features are available from the individual Securities market data pages:




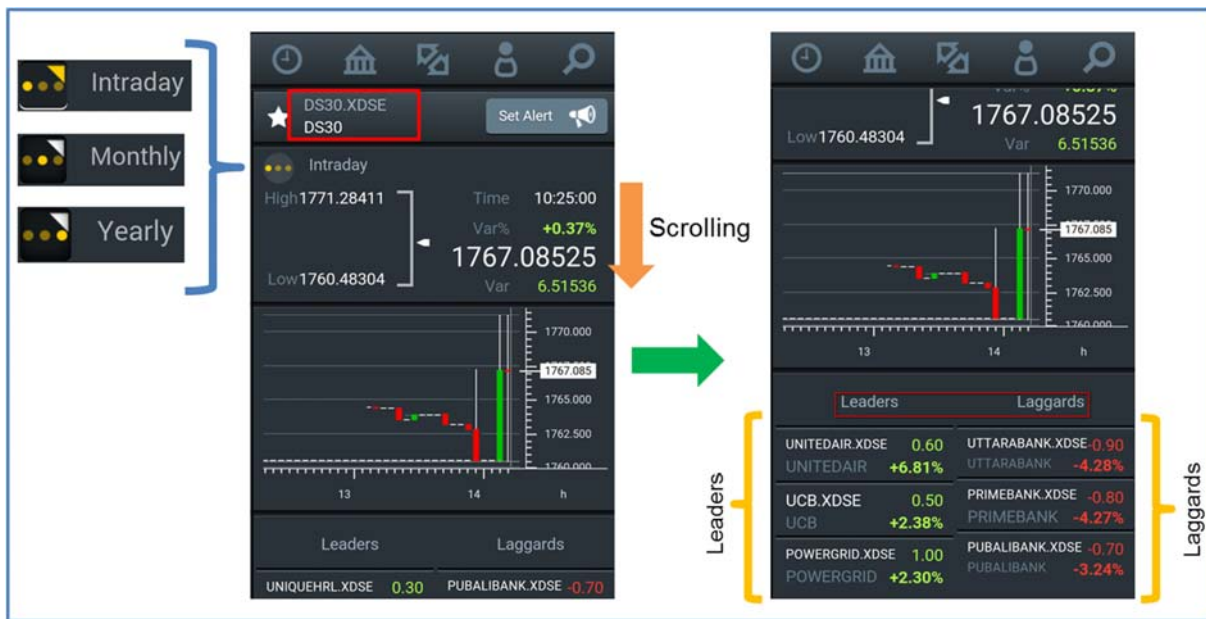
■ **Market Data** - It gives you Intraday/Monthly/Yearly statistics. To change tap on  icon. Following information will be displayed based on your tap”


- High & Low price of the securities e.g. BXPHERMA High 76.20 and Low 74.90;
- Time – Last Trade time/date e.g. BXPHERMA at 12:02:22;
- Var% – Variation in percentage e.g. BXPHERMA +1.46%
- Last Trade Price (LTP) e.g. BXPHERMA 76.20;
- Var – Variation in amount e.g. BXPHERMA 1.10;

- **Chart** – Standard chart in concise form. Details in the section 5.4.3;
- **Portfolio Position** – Your portfolio position and average unit cost of the securities e.g. you have 3500 BXPHERMA and average unit cost is 65.00 BDT. *Note that, the quantity and avg. unit cost based on BOS data uploaded by broker;*
- **Buy-Sell** – You can place Buy or Sell order if your broker allow;
- **Bid-Ask** – The best bid and ask information or Market Depth;
- **Last Transaction** – Last two transactions;
- **News** – The news title of the securities. *For details please visit www.dsebd.org;*

5.4.2 Market Index Details

The following features are available from the individual Index market data pages (eg: tap on a index form the watchlist ):



- **Market Data** - It gives you Intraday/Monthly/Yearly statistics. To change tap on  icon. Following information will be displayed based on your tap:
 - High-Low value of the index e.g. DS30 High 1746.89311 and Low 1742.08684;
 - Time – Last updated time/date e.g. DSE30 at 22:20:00;
 - Var% – Variation in percentage e.g. DS30 +0.11%;
 - Current Index Value e.g. DS30 1745.35844;
 - Var – Variation e.g. DS30 2.04716;
- **Leaders** – Top 10 leaders on the selected index e.g. UNITEAIR, UCB, POWERGRID;
- **Laggards** – Top 10 laggards on the selected index e.g. UTTARABANK, PRIMEBANK, PUBALIBANK;

5.4.3 Chart on Securities/Index

You can get large view of the chart by changing the orientation of your mobile device from portrait to landscape. In the landscape view you can also customize the chart with following parameter:

- Plotting time like 5 min, 10 Min 1 day, 2 days 1 week 1 mon etc.;
- Technical indicators (e.g.: DMI, RSI, MACD, WMA, volume, etc.)



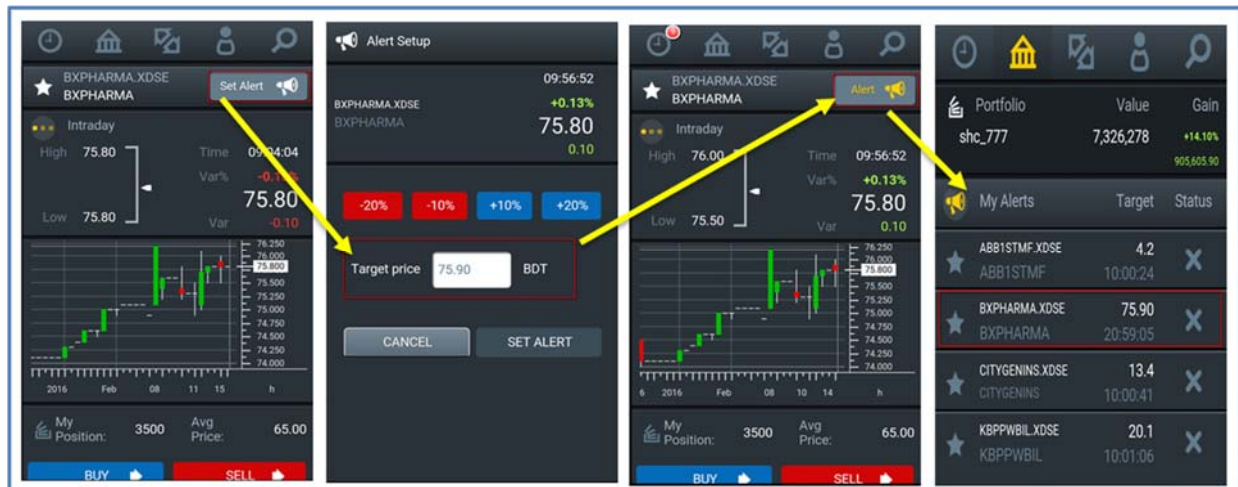
Advanced chart on Securities



Advanced chart on Index with MACD technical indicator

5.5 Set and Manage Price Alerts

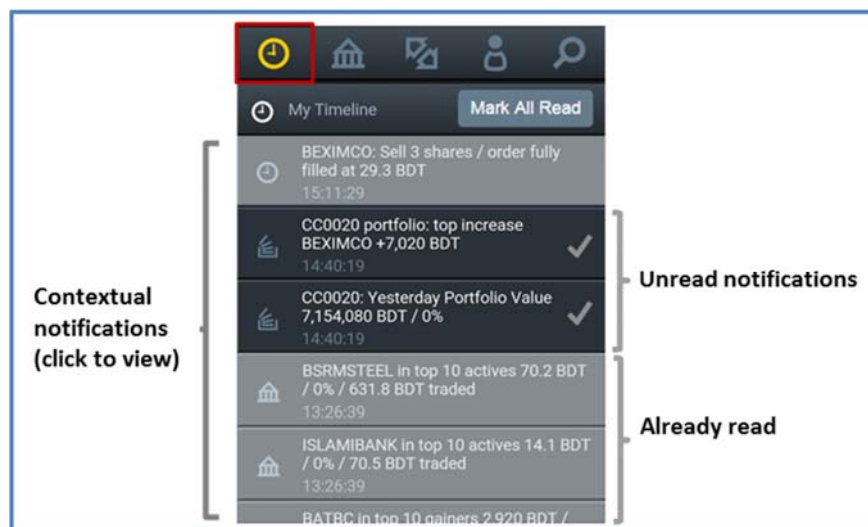
- An alert can be set for any securities, to be notified about market opportunity;
- Tap on the “Set alert” from the detail view of the securities;
- You can set alert on target price or $\pm 10\%$ or $\pm 20\%$ of the LTP; e.g. on BSCCL alert set on 107.60 BDT;
- All the configured alerts can be managed in the “My alerts” category of the Watch-list;



5.6 Notifications

DSE-Mobile will automatically receive notifications from market data algorithms, as well as trading updates based on your orders. These notifications will be received and stored in the notifications tab, even when your phone is in idle mode.

- Portfolio value at market open/close
- Market updates based on your favorites and positions
- Intraday order real-time execution, Price alerts triggered and more...





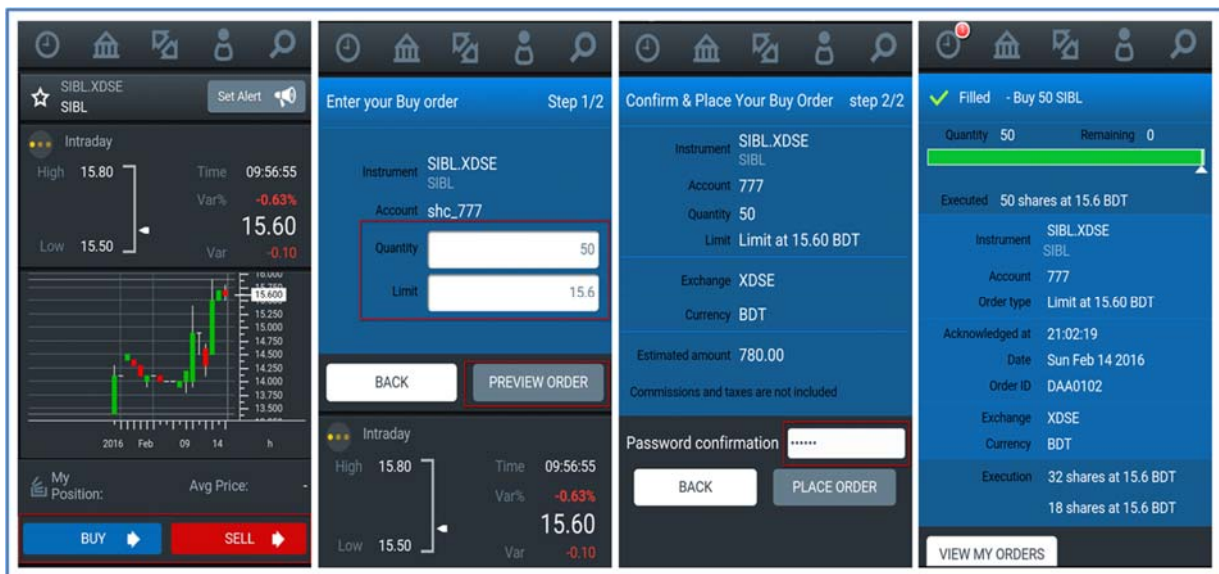
The various notifications types follow different timing matching the market activity:

Notification Types	Event/Timing	Example
Portfolio value (positions)	Market opening + 25 minutes	“CLIENT01: Your portfolio value: 125,987 BDT / +1.03%”
Top position increase/drop (Impact around market open/close)	Market opening + 35 minutes Market closing - 30 minutes	“CLIENT01portfolio: top increase GP +943.2 BDT / top drop RENATA -485.1 BDT”
Top movers (opportunities for portfolio/intra-day favorites)	Market opening + 15 minutes Market opening + 1h15 Market opening + 2h15 Market opening + 3h15	“GP in top 10 gainers 61.23 BDT / +15.23% / 125,456,123 BDT traded”
Order gets executed	Full matched order	“DESCO.BK: Sell 200 shares / order fully executed at 41.5 BDT”
Price alerts	On limit price trigger	“Hit GP.XDSE: target price 60.345 BDT breached. Alert unset.”

6 Trading

6.1 Place Order

- Trading is allowed for ‘DSE-Mobile Trader’ subscribers only
- Only limit orders can be placed
- You can place order in Normal (Public/Spot) board
- You must put password (login password) for placing order to ensure security
- Your orders will be submitted directly in the market and monitored by the assigned trader
- You can cancel or withdraw your own submitted orders but replace/modification is allowed by the trader only






6.2 My Orders - check intraday orders and executions

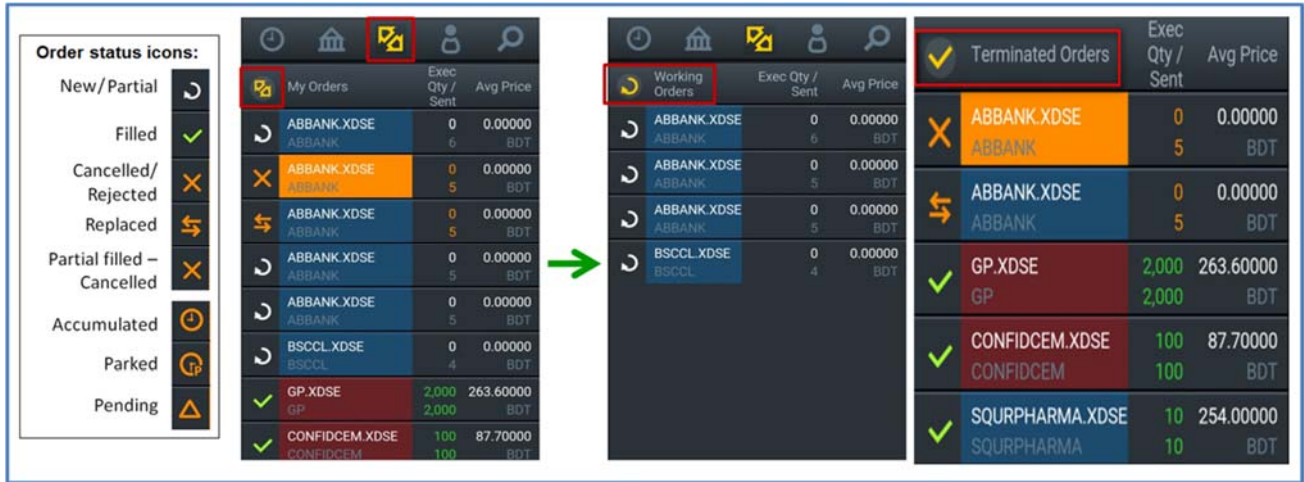
All your intraday orders placed by you and your trader will be updated in real-time in “my orders” tab.

Following information will be displayed:

- Securities Name – Securities name along with board information BL, BI etc. e.g. GP, ACI.BL
- Sent - Submitted order quantity of the securities e.g. GP 2000
- Exec Qty - Executed/Matched quantity of the securities e.g. GP 2000
- Avg Price – Average executed price of the securities e.g. GP 263.6000

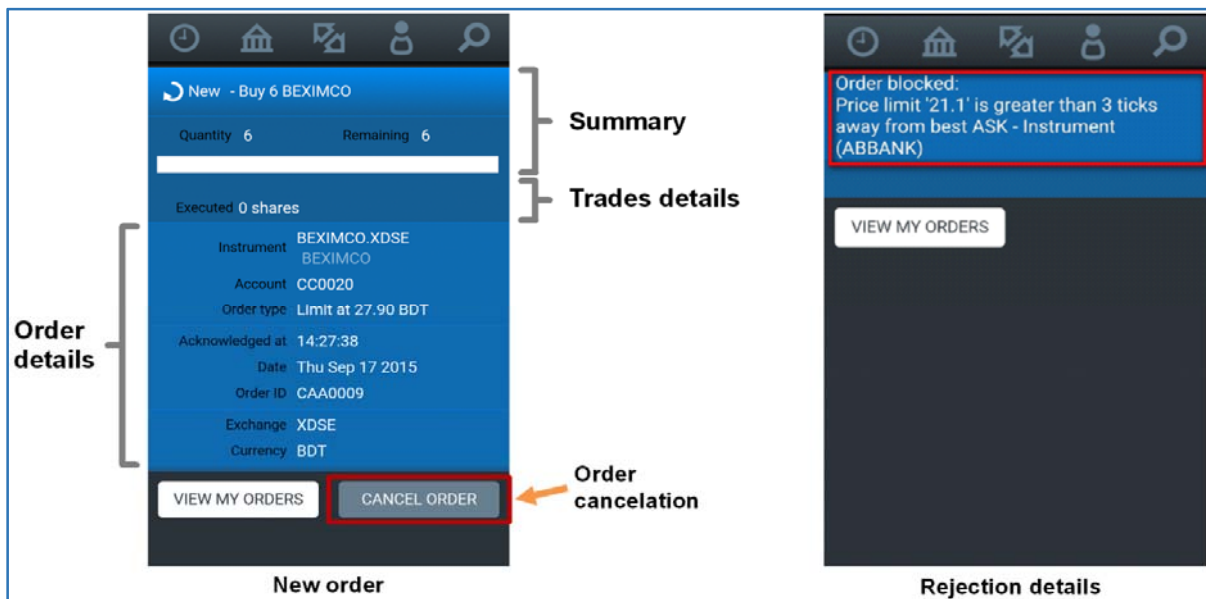
Tap on the icon  for following displays:

- My Orders  - All your orders placed by you and your trader;
- Working Orders  - Orders which are available/active in the market;
- Terminated Orders  - Orders which are fully matched, rejected, replaced, cancelled etc.;




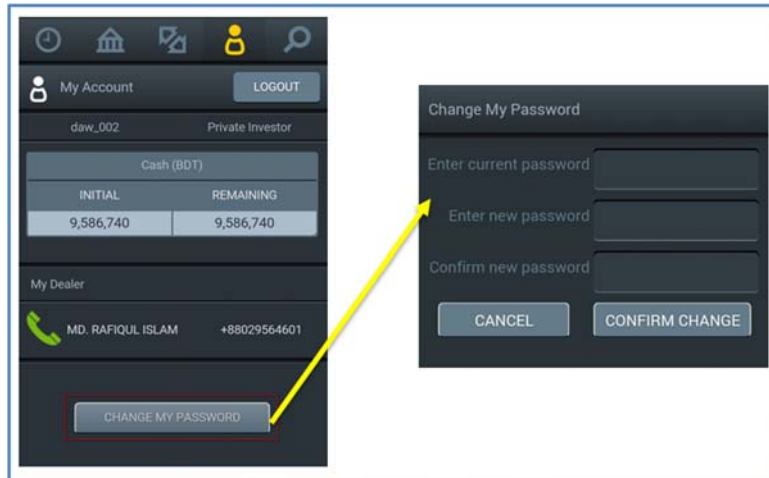
6.3 Order Details & Cancellation

- You can view details of any intraday orders listed in “My orders” tab
 - The details include individual trades executions, execution summary and order details;
 - Rejected orders will display the rejection reason, like risk management, OMS, compliance etc.;
- You can cancel/withdraw your own submitted orders;

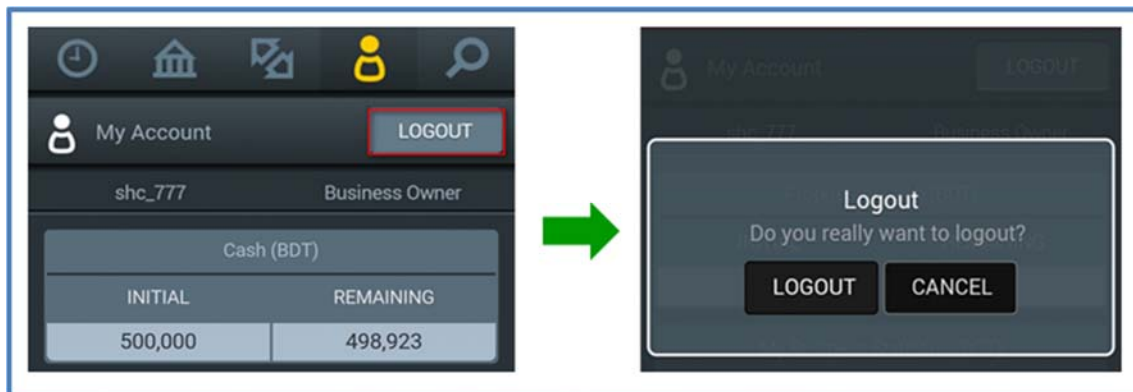


7 Account Details

To know your account details tap on the icon  from the tab.



- Cash information:
 - Initial – Cash amount as uploaded or updated by your broker;
 - Remaining – Remaining cash balance of your account to purchase securities;
 - {Remaining = Initial – Buy order amount + Sold amount (securities under cash netting)}
- My Dealer –Your trader name and contact number. You can call from the App;
- Change Password – You can change the password as per password profile
 - Password length minimum 6 characters
 - Password will be expired after 30 days
 - User will be locked on 5 failed attempts to login
 - User is set to dormant after 60 days without user login
 - Password has to be different from the last one password
- Logout – You can logout from the My Account tab



8 Service Availability

DSE-Mobile service will be available all the time with:

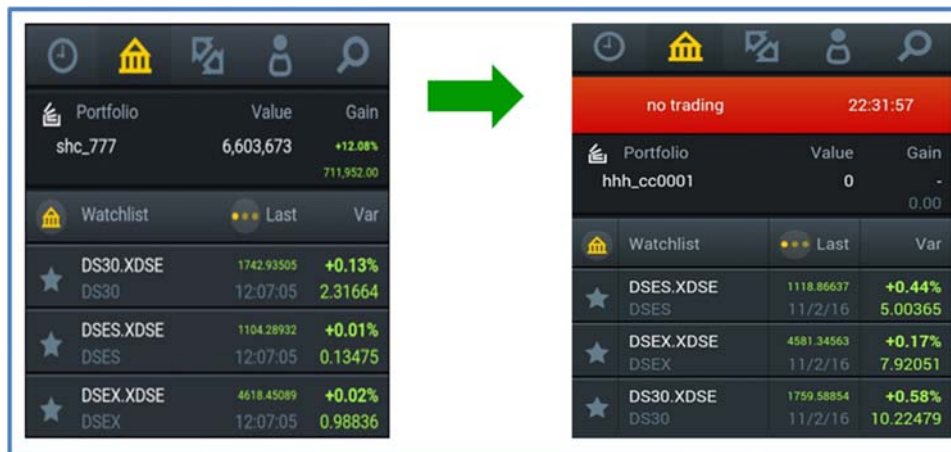
- Healthy network
- Recommended mobile OS (Android) and official firmware
- Sufficient free resources e.g. memory, processor, etc.

You may experience service disruption in following scenario:

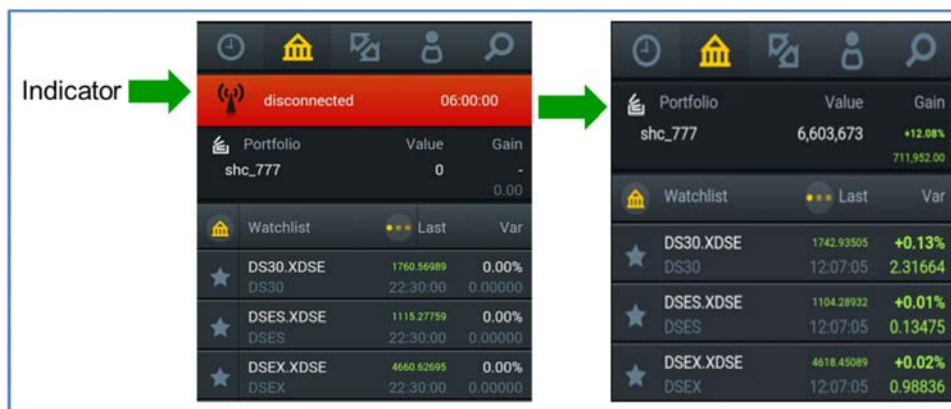
- Session Timeout – User session will be expired after 10 minutes of idle session. You would have to re-login in that case.
- The App will be logged out, if you have login from other device with the same ID.

8.1 Warning indicators

- Trading Session - The App will show “no trading” banner beyond trading sessions. DSE standard trading session is 10:30 am to 2:30 pm (BST).



- Network/Connectivity - For any technical reason or weak network (e.g. Wi-Fi/3G drop) ‘disconnected’ banner will be displayed. App will be automatically reconnected once network established.





8.2 Troubleshooting

Below details can be used to troubleshoot the various Warning Indicators that may be displayed:

- **No internet access**
 - Device is not connected to Internet (e.g.: Wi-Fi/network drop or LAN/WAN without Internet access)
- **Disconnected**
 - Device is not connected to the server (e.g.: very poor network connection, Wi-Fi/network drop...)
 - Device will not receive any market updates and trading is also not possible, until reconnection.
 - May happen temporarily during system maintenance.
- **Poor network**
 - Device network connection is poor.
 - Device will still receive data updates but it will probably be delayed/slow.
 - Most screen/tabs may take a longer time to be displayed.
- **No trading**
 - Trading is not available (e.g.: before market pre-open or post-close sessions).
 - Blotter is not updated in real-time.
 - Market data updates can still be received.
- **No market data**
 - Market data is not available.
 - Watch-list and shares details are not being updated in real-time.
 - Trading is still available without real-time price updates (e.g.: market depth, charts...).
- **No trading & market data**
 - Both trading and market data updates are not available.
 - Blotter is not updated in real-time.
 - Watch-list and shares details are not being updated in real-time.



9 Support Information

- Your portfolio information may differ from the information provided by the broker, due to commission, charges etc.
- Be updated with the latest version of DSE-Mobile for smooth operation.
- Contact your broker if your account become blocked, dormant, suspended etc.
- Contact your broker if forget the password.
- User credentials and reset password will be sent through system generated email. The sender address is dftpprod@dsebd.org. Please check your junk box if the email is not available in the inbox.
- Please contact your broker for any query, or technical issues.

10 More information online

- Visit  **DSE-Mobile** corner in the www.dsebd.org to get up-to-date information.
- You can also visit DSE-Mobile's **facebook** page at <https://www.facebook.com/DSEMobileInvestor/timeline> or search "DSE-Mobile" in **facebook**.